

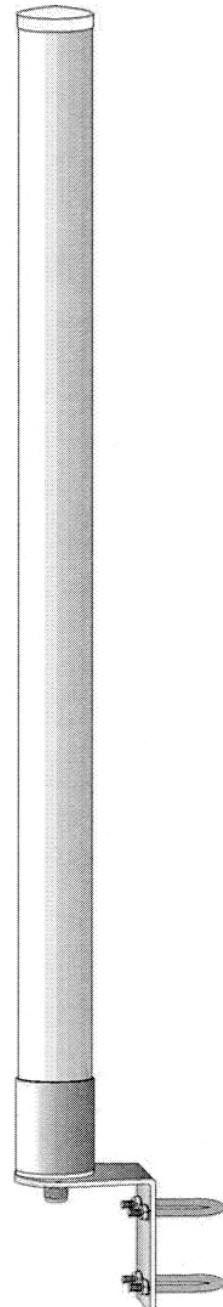
Omnidirectional UHF base antenna

1710 – 1880 MHz

SF 1837

Specifications:

Type	: Colinear
Frequency range	: 1710 - 1880 MHz
Input impedance	: 50 ohm
V.S.W.R.	: < 1:1.5
Beamwidth -3 dB	: 15°
Maximum rated RF power	: 200 watt cont.
Polarization	: Vertical
Gain	: 7 dBd (9.13 dBi)
Type of connection	: N female
Mounting hole	: From 30 to 40 mm master tube
Length	: 530 mm



RADIATION PATTERN

