

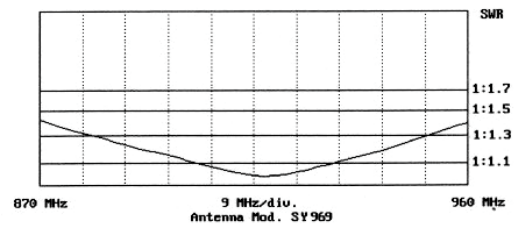
Eleven elements Yagi antenna

870 – 960 MHz

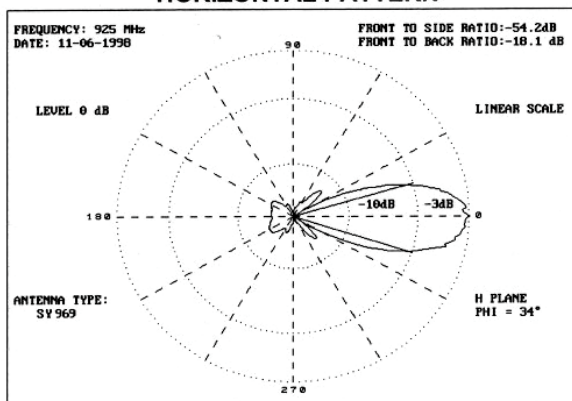
SY 969

Specifications:

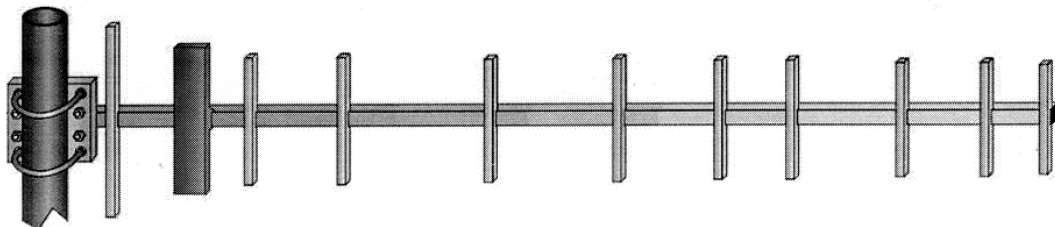
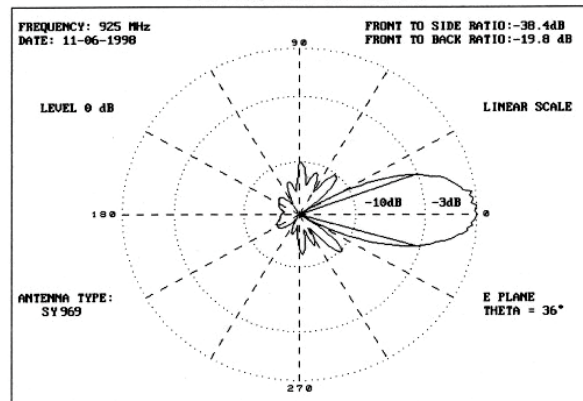
Type	: 11 el. Yagi
Frequency range	: 870 - 960 MHz
Input impedance	: 50 ohm
V.S.W.R.	: < 1:1.5
Beamwidth -3 dB	: H plane 34° - E plane 36°
Maximum rated RF power	: 200 watt
Polarization	: Vertical or Horizontal
Gain	: 12 dBd (14.13 dBi)
Type of connection	: TNC female
Mounting hole	: From 25 to 50 mm master tube
Boom material	: Aluminium
Elements material	: Aluminium
Wind resistance	: 120 Km/h.
Dimensions	: 1000 mm x 195 mm
Net weight	: 1100 g



HORIZONTAL PATTERN



VERTICAL PATTERN



Walter Krenn
Hochfrequenztechnik GmbH

Simmeringer Hauptstraße 421
1110 Wien, Austria

Tel.: +43-1-748 7117/0
Fax.: +43-1-748 7117/90