

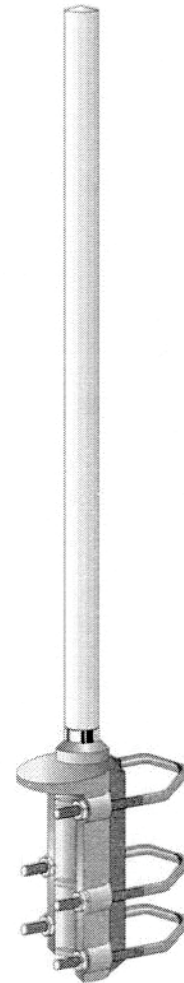
Omnidirectional UHF base antenna

400 – 470 MHz

SF 420

Specifications:

Type	: Coaxial dipole
Frequency range	: 400 - 470 MHz
Input impedance	: 50 ohm
V.S.W.R.	: < 1:1.5
Beamwidth -3 dB	: 74°
Maximum rated RF power	: 200 watt cont. 400 watt peak
Polarization	: Vertical
Gain	: 0 dBd
Type of connection	: N female
Mounting hole	: From 30 to 62 mm master tube
Anchor treatment	: Alodine 1200
Wind resistance	: 120 km/h
Length	: 635 mm
Net weight	: abt. 1500 g
Working temperature	: From -40° to +75°



RADIATION PATTERN

