

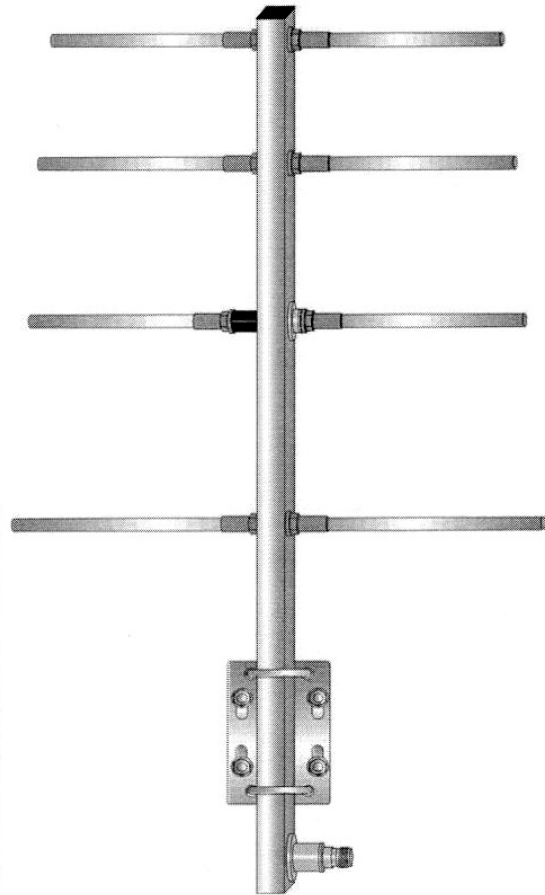
Four elements Yagi antenna

140 – 158 MHz

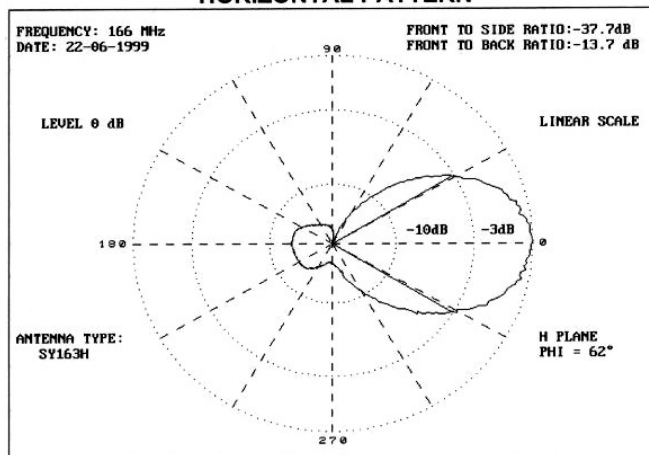
SY 164L

Specifications:

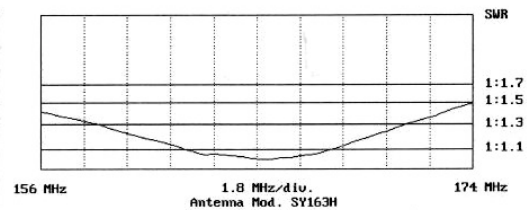
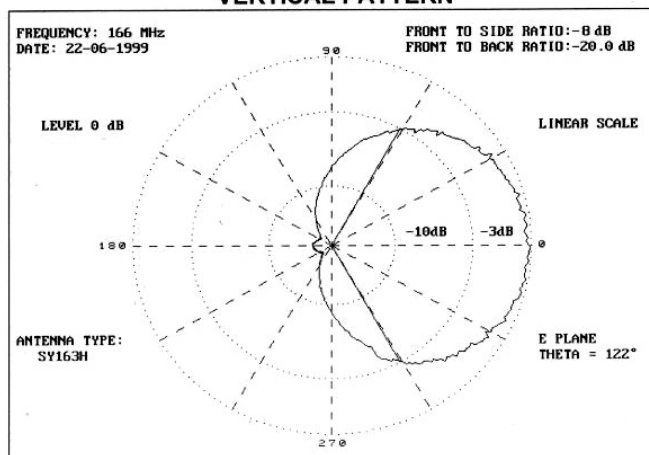
Type	: 4 el. yagi
Frequency range	: 140 - 158 MHz
Input impedance	: 50 ohm
V.S.W.R.	: < 1:1.5
Beamwidth -3 dB	: H plane 56° - E plane 81°
Maximum rated RF power	: 200 watt
Polarization	: Vertical or Horizontal
Gain	: 7 dBd
Type of connection	: N female
Mounting hole	: From 30 to 62 mm master tube
Boom material	: Anticorodal
Elements material	: Anticorodal
External treatment	: Alodine 1200
Wind resistance	: 120 Km/h.
Dimensions	: 1828 mm x 1054 mm
Net weight	: 3000 g



HORIZONTAL PATTERN



VERTICAL PATTERN



Walter Krenn
Hochfrequenztechnik GmbH

Simmeringer Hauptstraße 421
1110 Wien, Austria

Tel.: +43-1-748 7117/0
Fax.: +43-1-748 7117/90