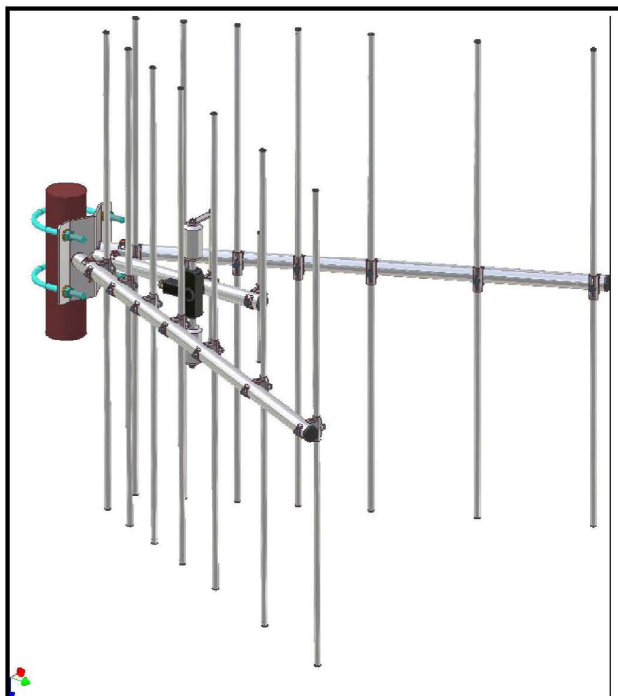


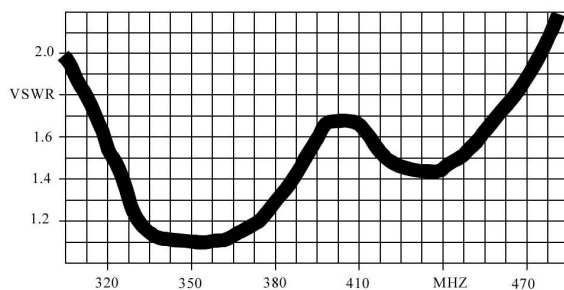
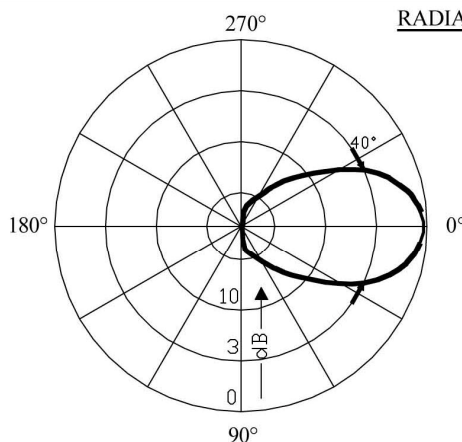
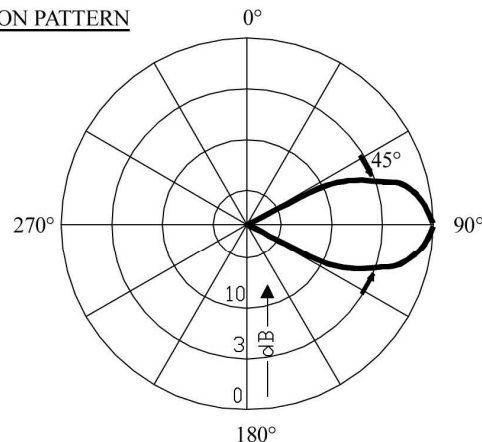
Directive Corner Antenna

320 – 470 MHz

T-DC.320-470.13**TECHNICAL SPECIFICATIONS**

Impedance (Ohms):	50
Frequency range:	320 ÷ 470 MHz
V.S.W.R.:	less than 2.0
Beamwidth -3 dB:	See "RADIATION CURVE"
Polarization:	Vertical
Connector:	N-female
Mounting:	on masts from 60 to 115 mm diam.
Gain (dBi):	13
Max power (W):	150
Wind resistance:	160 Km/h
Temperature (°C):	-40° - +85°
Dimensions (mm):	1200 x 1000 x 700
Net weight (g):	8500 ± 2000
Material	
Boom:	Alluminium alloy EN AW-6082
Elements:	Alluminium alloy EN AW-6082
Screw and nuts:	Stainless Steel
Treatment:	Phospho-chromium plating (in specification RoHS)

DEVICE EQUIPPED WITH A DC GROUNDED SYSTEM AND CONDENSING HOLE

V.S.W.R.RADIATION PATTERNH-PLANEE-PLANE

Walter Krenn
Hochfrequenztechnik GmbH

Simmeringer Hauptstraße 421
1110 Wien, Austria

Tel.: +43-1-748 7117/0

Fax.: +43-1-748 7117/90