

Omnidirectional Antenna

380 – 430 MHz

T-OC.380-430.07**TECHNICAL DATA:**

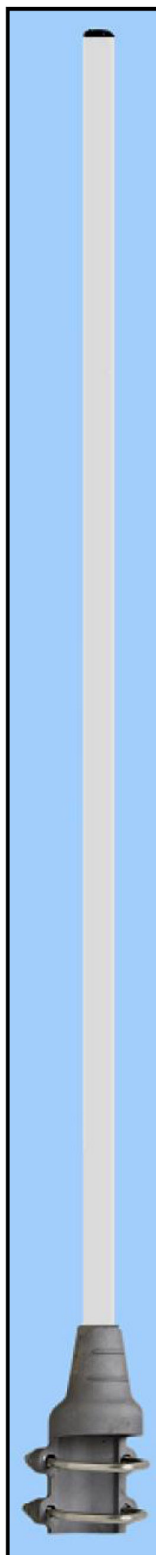
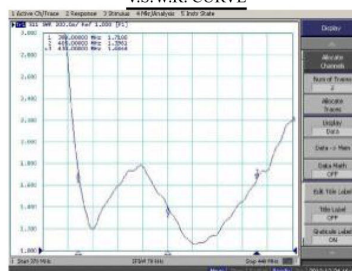
Impedance (Ohms): 50
 Frequency range: 380 ÷ 430 MHz
 V.S.W.R: less than 1.85
 Beamwidth -3 dB: 22°
 Polarization: Vertical
 Connector: N-female
 Mounting: on masts from 33 to
 60 mm diam.

Gain (dBi): 7
 Max power (W): 200
 Wind resistance: 180 Km/h
 Temperature (°C): -40° - +85°
 Dimensions (mm): 2300±200
 Net weight (g): 2200±200

Material

Bracket: Aluminium alloy EN AB-44100
 Cylindric mast: Epox glass
 Screws and nuts: Stainless steel

**DEVICE EQUIPPED WITH A DC GROUNDED SYSTEM
 AND CONDENSING HOLE.**

V.S.W.R. CURVE**MONTAGGIO INTERNO STAFFA****MONTAGGIO ESTERNO STAFFA**