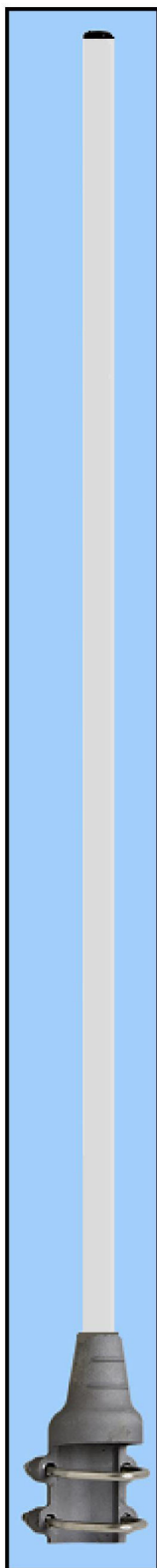


Omnidirectional antenna

156 – 165 MHz

T-OD.156-165.02**TECHNICAL DATA:**

Impedance (Ohms):	50
Frequency range:	156 ÷ 165 MHz
V.S.W.R:	less than 1.5
Beamwidth -3 dB:	78°
Polarization:	Vertical
Connector:	N-female
Mounting:	on masts from 33 to 60 mm diam.
Gain (dBi):	2
Max power (W):	100
Wind resistance:	160 Km/h
Temperature (°C):	-40° - +85°
Dimensions (mm):	1270
Net weight (g):	1200
Material	
Bracket:	Aluminium alloy EN AB-44100
Cylindric mast:	Epox glass
Screws and nuts:	Stainless steel

